



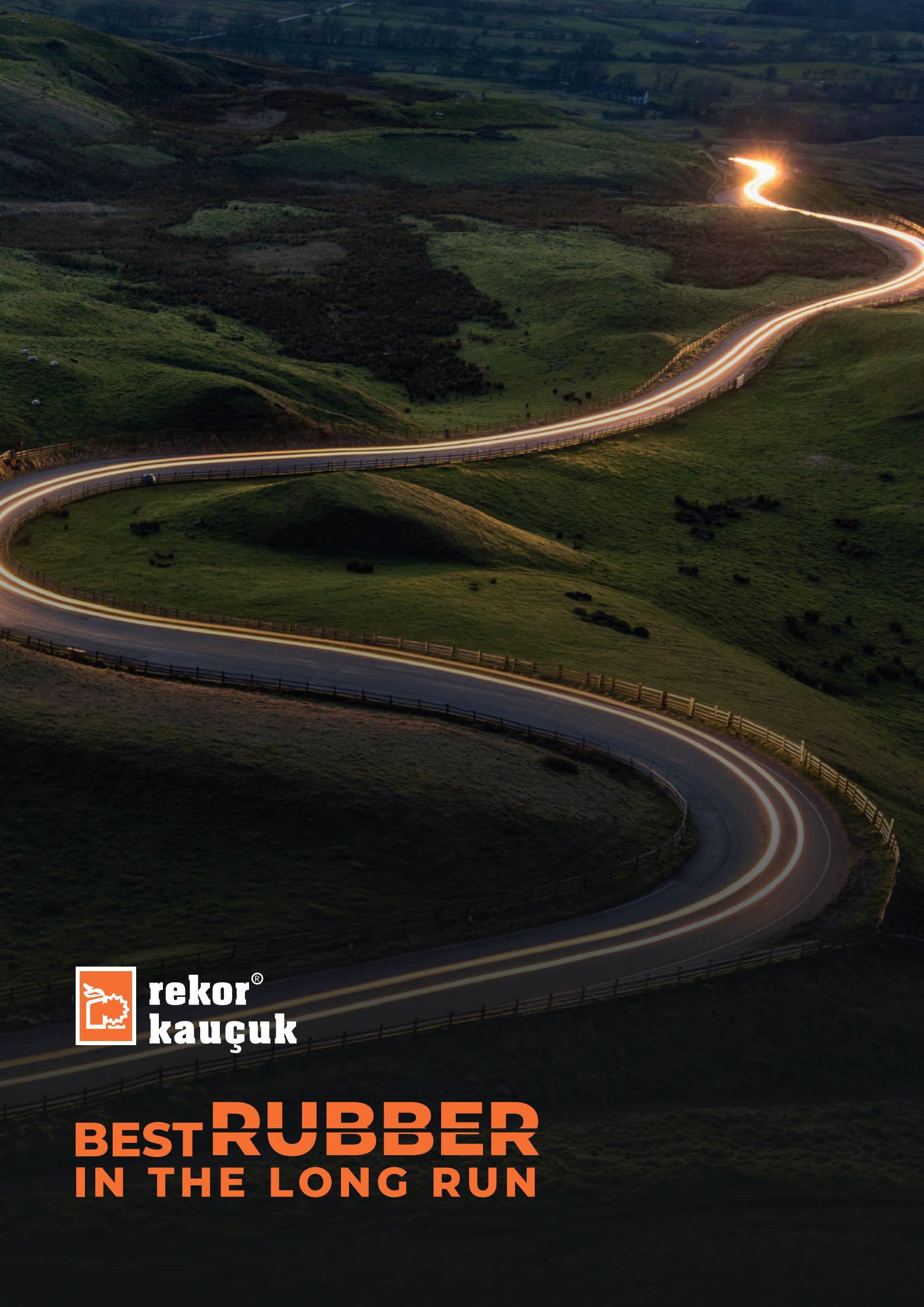
**rekor<sup>®</sup>**  
**kauçuk**

rekor.com



**AVON**  
PREMIUM PRECURE

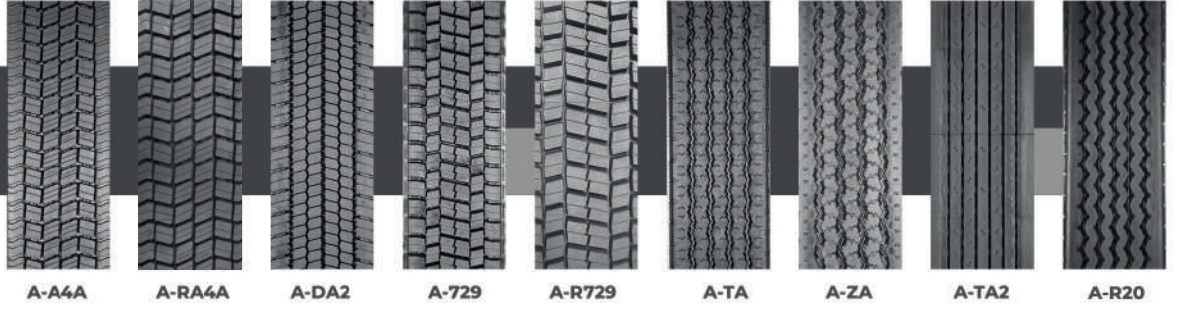




**rekor<sup>®</sup>  
kauçuk**

**BEST RUBBER  
IN THE LONG RUN**

ULUSLARARASI / LONG HAUL



A-A4A

A-RA4A

A-DA2

A-729

A-R729

A-TA

A-ZA

A-TA2

A-R20

BÖLGESEL / REGIONAL



A-DR

A-D2LT

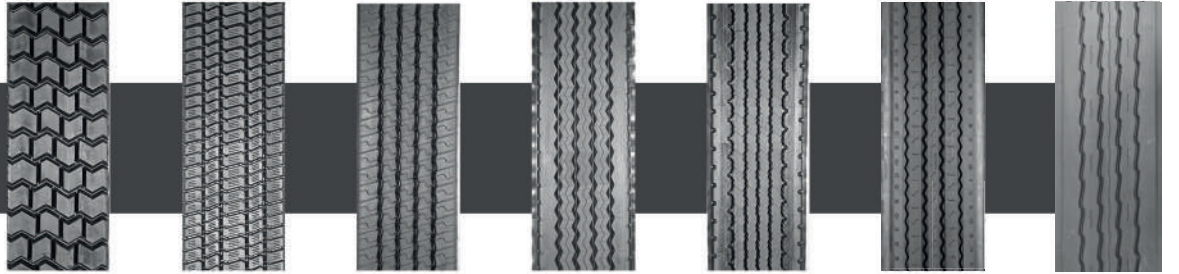
A-D2I

A-D2

A-D2H

A-711

ŞANTİYE / CONSTRUCTION



A-GP2

A-MD

A-ZE2

A-TE2

A-164

A-WBT

A-RT1000

YOL DIŞI / OFF THE ROAD



A-GZ

KIŞ / WINTER



A-RF4

A-DM4

A-831S

A-WZ

A-GT

A-GP

# BEST RUBBER IN THE LONG RUN

1947 Yılında İstanbul Kurtuluş semtinde kurulan Rekor Kauçuk, İstanbul Pendik' te kurulu merkez yerine 1978 senesinde taşınmıştır. Rekor Kauçuk; günümüzde kauçuk sektörünün Türkiye' deki öncü ve lider kuruluşlarındandır.

Türkiye, Avrupa ve Amerika' nın en iyi makine üreticileri tarafından üretilmiş en modern ekipmanlarla donatılmıştır. Üretim, 2017 yılında, Eskişehir Organize Sanayi Bölgesi'nde bulunan ve 75.000 m2 açık alan üzerine ve 38.000 m2 kapalı alan üzerine kurulu fabrikasına taşınmıştır. Soğuk sırt kauçuğu üretimi ve teknik hamur üretimi olmak üzere iki ana üretim bölümü mevcuttur.

Birinci bölüm hamur karışımı ile ilgili olup, ikinci bölümde ise soğuk kaplama sırt kauçuğu üretim tesisi bulunmaktadır. Her zaman mevcut standartların çok üstünde üretim yapma felsefesi, Rekor Kauçuk un kalitesini oluşturmaktadır.

Firmamız çağdaş teknolojilere sahip işletmesinde ve pazarlama hizmetinde ISO 9001:2015 - ISO 14001:2015 - ISO 45001:2018 - ISO 27001:2017 - IATF 16949:2016 - AS 9100:2016 - TS 13828, belgelerine sahip Türkiye'nin öncü kuruluşlarındandır.

İstanbul Pendik, Genel Müdürlük olarak faaliyetine devam etmektedir.

Rekor Kauçuk being founded in 1947 in the Kurtulus district of Istanbul, has moved to its location in Pendik in 1978. Today Rekor is the leading company of Turkish Rubber Industry, equipped with the newest machineries of the best manufacturers in the world. The production has moved to it's new plant in Eskişehir Industrial Zone in 2017, with a total of 75.000 m2 land, 38.000 m2 of which is closed area. The production is mainly separated into two segments, technical compound production and precure tread production.

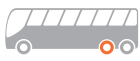
The first one is rubber compounding operations for a wide range of Automobile industry needs whilst the second one is producing precure treads for tyre retreading industry.

The philosophy of Rekor Kauçuk is always making better quality production above the existing standards. This is provided with the ISO 9001:2015 - ISO 14001:2015 - ISO 45001:2018 - ISO 27001:2017 - IATF 16949:2016 - AS 9100:2016 - TS 13828, quality certificates and served to its valuable customers. İstanbul Pendik office is still in operation as the Headquarter.

## SEMBOLLER / ICON SET



Ş. İçi Otobüs / Urban



Ş. Arası Otobüs / Coach



Kamyon / Truck



Kamyonet / Light Truck



Damper / Dumper



Çekici / Tractor



Treyler / Trailer



Mikser / Mixer



Uluslararası / Long Haul



Şantiye / Construction



Yoldışı / Off Road



M + S Marking



Bölgesel / Regional



3PMSF



Yönlü / Direction



Şehir İçi / Urban

ULUSLARARASI / LONG HAUL

BÖLGESEL / REGIONAL

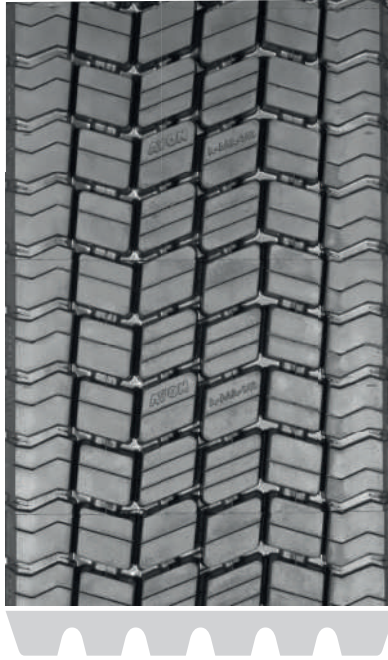
ŞANTİYE / CONSTRUCTION

YOL DIŞI / OFF-ROAD

KIŞ / WINTER

# A4A

Uluslararası / Long Haul



±2MM	±0.5MM	±%2	±%2
220	17	3.95	10.1
230	17	4.09	10.1
240	17	4.29	10.1
250	17	4.55	10.1
260	17	4.88	10.1

# RA4A

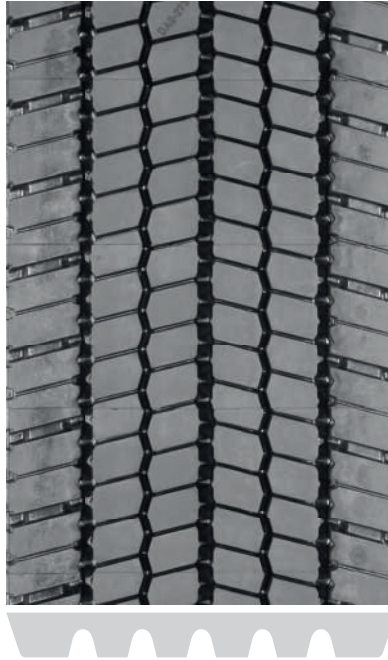
Uluslararası / Long Haul



±2MM	±0.5MM	±%2	±%2
240	17	4.19	10.1
250	17	4.45	10.1
260	17	4.59	10.1

# DA2

Uluslararası / Long Haul



±2MM	±0.5MM	±%2	±%2
250	18.5	5.01	10.1
260	18.5	5.11	10.1
275	18.5	5.48	10.1

# 729

Uluslararası / Long Haul



			
±2MM	±0.5MM	±%2	±%2
230	21	4.98	10.1
240	21	5.14	10.1
250	21	5.35	10.1
260	21	5.56	10.1
280	21	6.32	10.1

# R729

Uluslararası / Long Haul

# R729

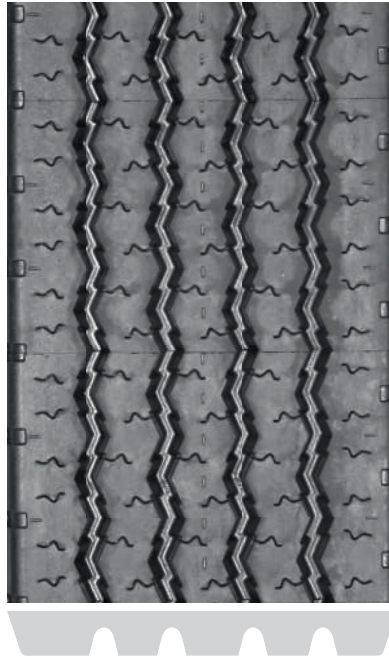
Bölgesel / Regional







			
±2MM	±0.5MM	±%2	±%2
250	18	4.85	10.1
260	18	5.07	10.1
275	18	5.46	10.1
285	18	5.71	10.1

# TA

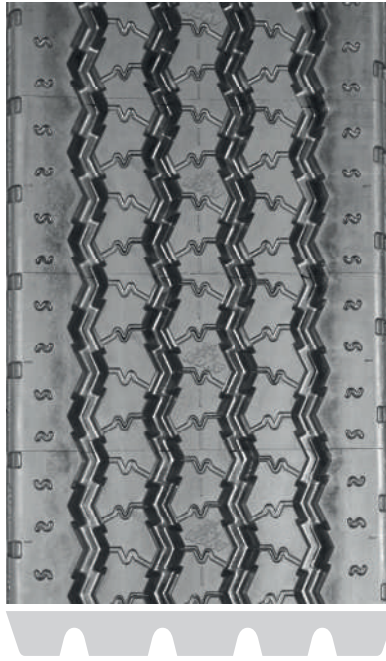
Uluslararası / Long Haul



			
±2MM	±0.5MM	±%2	±%2
140	12	1.82	10.1
150	12	1.95	10.1
160	12	2.21	10.1
170	12	2.28	10.1
180	12	2.41	10.1
190	12	2.60	10.1
200	12	2.85	10.1
210	12	3.03	10.1
220	12	3.22	10.1
230	12	3.30	10.1
240	12	3.49	10.1
250	14	4.00	10.1
260	14	4.15	10.1

# ZA

Uluslararası / Long Haul



±2MM	±0.5MM	±%2	±%2
220	13.5	3.25	10.1
230	13.5	3.37	10.1
240	13.5	3.48	10.1
250	14	3.67	10.1
260	14	3.81	10.1

# TA2

Uluslararası / Long Haul



±2MM	±0.5MM	±%2	±%2
380	13	5.87	10.1

# R20

Uluslararası / Long Haul

# R20

Bölgesel / Regional



±2MM	±0.5MM	±%2	±%2
295	14	4.68	10.1

# DR

Bölgesel / Regional



±2MM	±0.5MM	±%2	±%2
160	15	2.35	10.1
170	15	2.75	10.1
200	17	3.44	10.1
240	20	4.68	10.1
250	20	4.84	10.1
260	20	5.00	10.1
275	20	5.46	10.1

# D2LT

Bölgesel / Regional



±2MM	±0.5MM	±%2	±%2
180	15	3.15	10.1
190	15	3.21	10.1
220	16	3.90	10.1
230	18	4.61	10.1

# D2I

Bölgesel / Regional



±2MM	±0.5MM	±%2	±%2
240	17	4.38	10.1
250	17	4.58	10.1
260	17	4.77	10.1
275	17	5.07	10.1



# D2

Bölgesel / Regional



±2MM	±0.5MM	±%2	±%2
230	20	4.83	10.1
240	20	4.88	10.1
250	20	5.06	10.1
260	20	5.26	10.1
280	20	6.07	10.1

# D2H

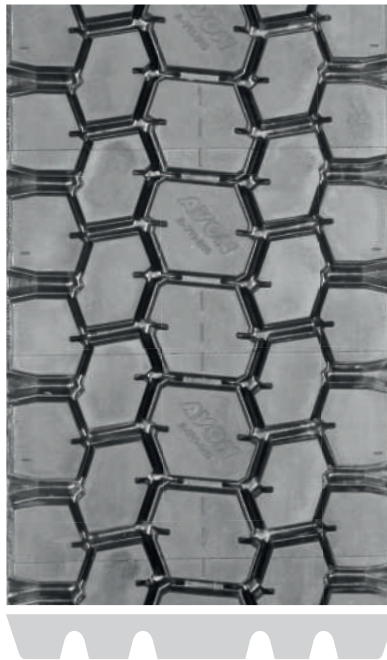
Bölgesel / Regional



±2MM	±0.5MM	±%2	±%2
250	22	5.60	10.1
260	22	5.74	10.1
275	22	6.06	10.1

# 711

Bölgesel / Regional



±2MM	±0.5MM	±%2	±%2
210	18.5	3.91	10.1
220	18.5	4.22	10.1
230	18.5	4.46	10.1
240	18.5	4.57	10.1
250	18.5	4.73	10.1
260	18.5	4.95	10.1

# GP2

Bölgesel / Regional



±2MM	±0.5MM	±%2	±%2
230	18	4.03	10.1
240	18	4.21	10.1
250	18	4.48	10.1
260	18	4.64	10.1
275	18	4.90	10.1

# MD

Bölgesel / Regional



±2MM	±0.5MM	±%2	±%2
150	12	1.80	10.1
160	12	1.91	10.1
170	13	2.35	10.1
180	14	2.53	10.1
190	15	2.78	10.1

# ZE2

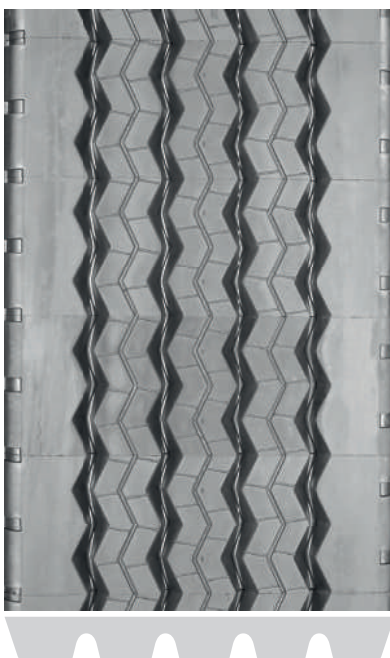
Bölgesel / Regional



±2MM	±0.5MM	±%2	±%2
230	15	3.89	10.1
240	15	4.09	10.1
250	15	4.23	10.1
260	15	4.42	10.1
275	15	4.66	10.1

# TE2

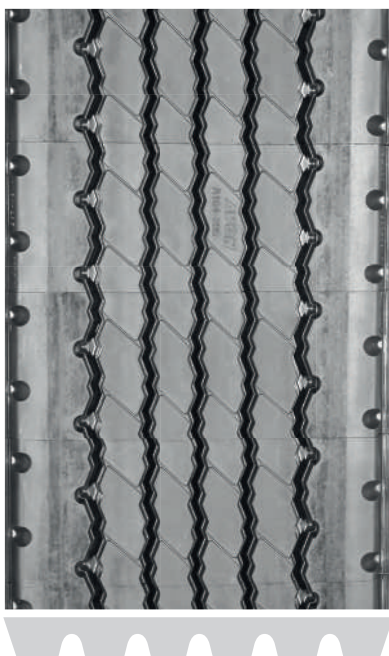
Bölgesel / Regional



±2MM	±0.5MM	±%2	±%2
295	14.5	4.97	10.1
310	14.5	5.16	10.1
330	14.5	5.51	10.1

# 164

Bölgesel / Regional



±2MM	±0.5MM	±%2	±%2
295	14.5	4.93	10.1
310	14.5	5.18	10.1

# WBT

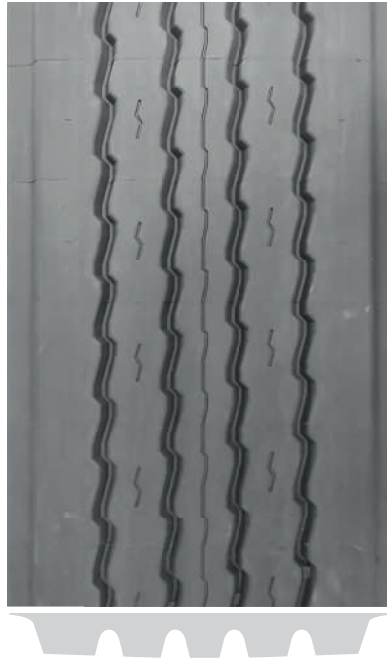
Bölgesel / Regional



±2MM	±0.5MM	±%2	±%2
200	12	2.81	10.1
210	12	3.01	10.1
230	12	3.32	10.1
240	14	3.78	10.1
250	14	3.95	10.1
275	14	4.51	10.1
285	14	4.66	10.1
295	14	4.82	10.1
310	14	5.12	10.1

# RT1000

Bölgesel / Regional



±2MM	±0.5MM	±%2	±%2
295	14	5.43	10.1
310	14	5.60	10.1

# FS

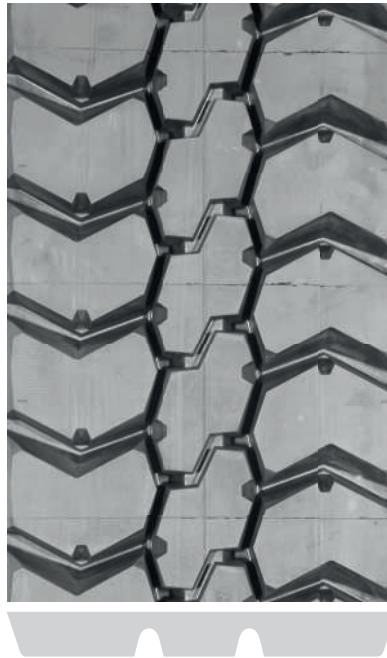
Şantiye / Construction



±2MM	±0.5MM	±%2	±%2
240	18	4.73	10.1
250	18	4.85	10.1
260	18	5.01	10.1
275	18	5.41	10.1

# FS2

Şantiye / Construction



±2MM	±0.5MM	±%2	±%2
250	22	5.95	10.1
260	22	6.15	10.1

# DY3

Şantiye / Construction



±2MM	±0.5MM	±%2	±%2
230	20	4.87	10.1
240	20	5.08	10.1
250	20	5.27	10.1
260	20	5.38	10.1
275	20	6.00	10.1

# DYI

Şantiye / Construction



±2MM	±0.5MM	±%2	±%2
220	17	3.95	10.1
230	17	4.14	10.1
240	17	4.25	10.1
250	17	4.50	10.1
260	17	4.70	10.1

# DY

Şantiye / Construction



±2MM	±0.5MM	±%2	±%2
220	21	4.65	10.1
230	21	4.80	10.1
240	21	5.04	10.1
250	21	5.24	10.1
260	21	5.49	10.1

# RD7500

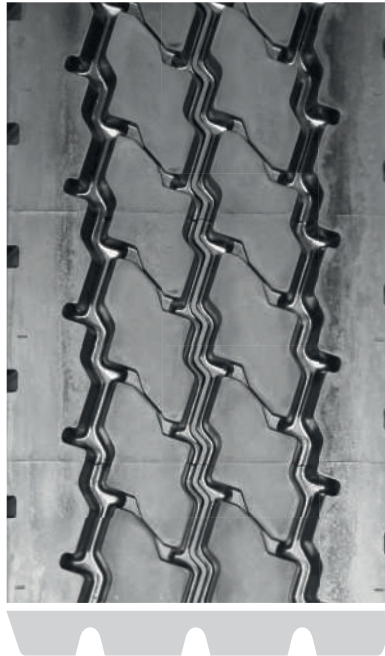
Şantiye / Construction



±2MM	±0.5MM	±%2	±%2
250	20	5.16	10.1
260	20	5.35	10.1

# ZY2

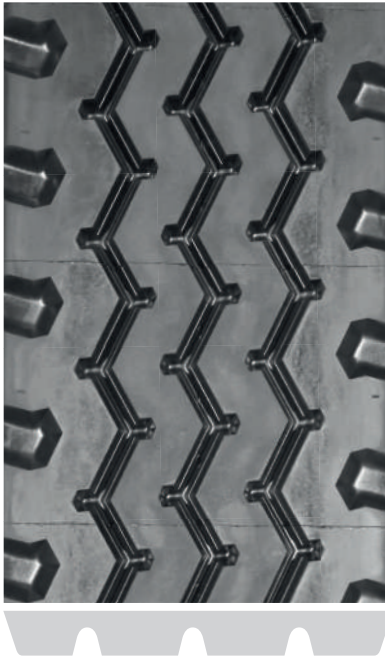
Şantiye / Construction



±2MM	±0.5MM	±%2	±%2
240	19	5.11	10.1
250	19	5.25	10.1
260	19	5.43	10.1

# ZY

Şantiye / Construction



±2MM	±0.5MM	±%2	±%2
210	17	3.60	10.1
220	17.5	4.00	10.1
230	18	4.14	10.1
240	18	4.32	10.1
250	18	4.58	10.1
260	18	4.84	10.1

# R32

Şantiye / Construction



±2MM	±0.5MM	±%2	±%2
295	14	4.68	10.1

# GZ

Yol Dışı / Off-Road



±2MM	±0.5MM	±%2	±%2
230	22	5.09	10.1
240	22	5.31	10.1
250	22	5.54	10.1
260	22	5.79	10.1

# RF4

Kış / Winter



±2MM	±0.5MM	±%2	±%2
260	18	5.22	10.1
275	19	5.63	10.1
285	18	5.57	10.1

# DM4

Kış / Winter



M+S



±2MM	+0.5MM	±%2	±%2
250	19	5.46	10.1
260	19	5.64	10.1
275	19	5.91	10.1

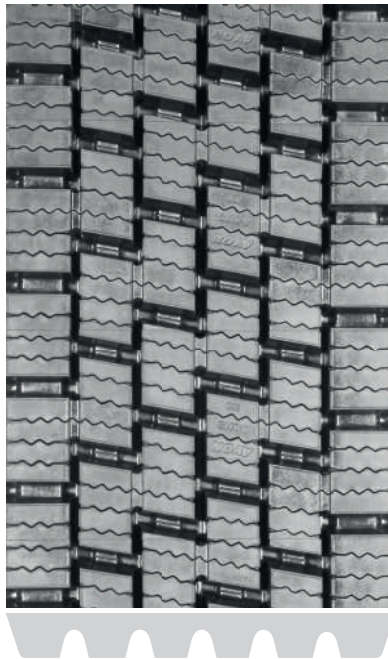
\*Not available in EU countries, USA and Canada

# 831S

Kış / Winter



M+S



±2MM	+0.5MM	±%2	±%2
230	22	5.02	10.1
240	22	5.24	10.1
250	22	5.36	10.1
260	22	5.69	10.1

# WZ

Kış / Winter



M+S



±2MM	+0.5MM	±%2	±%2
220	20	4.27	10.1
230	20	4.49	10.1
240	20	4.65	10.1
250	20	4.90	10.1
260	20	5.10	10.1

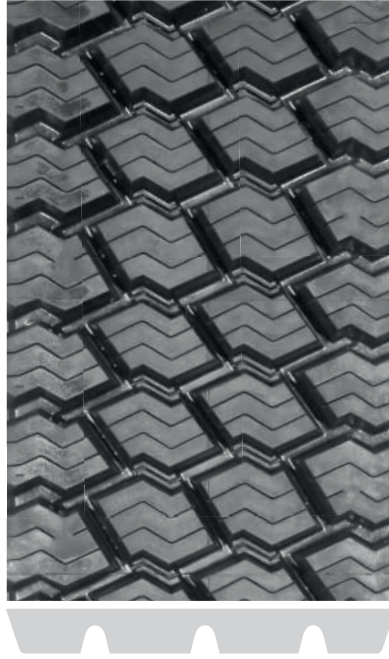


# GT

Kış / Winter



M+S



±2MM	±0.5MM	±%2	±%2
230	20	4.20	10.1
240	20	4.45	10.1
250	20	4.58	10.1
260	20	4.78	10.1
275	20	5.08	10.1

# GP

Kış / Winter



M+S



±2MM	±0.5MM	±%2	±%2
140	12	1.70	10.1
150	12	1.86	10.1
160	12	2.02	10.1
170	12	2.08	10.1
180	13	2.41	10.1
190	14.5	2.79	10.1
200	16	3.08	10.1
210	16	3.23	10.1
220	16	3.35	10.1
230	17	3.61	10.1
240	17	3.71	10.1
250	17	3.86	10.1
260	17	3.92	10.1

# YAMALAR



**RD 10**



**RD 09**



**RD 08**



**RD 07**



**OTR 5**



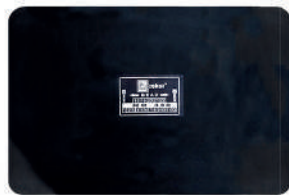
**OTR 4**



**OTR 3**



**RR 460**



**RR 440**



**RR 56**



**RR 52**



**RR 42**



**RR 40**



**RR 35**



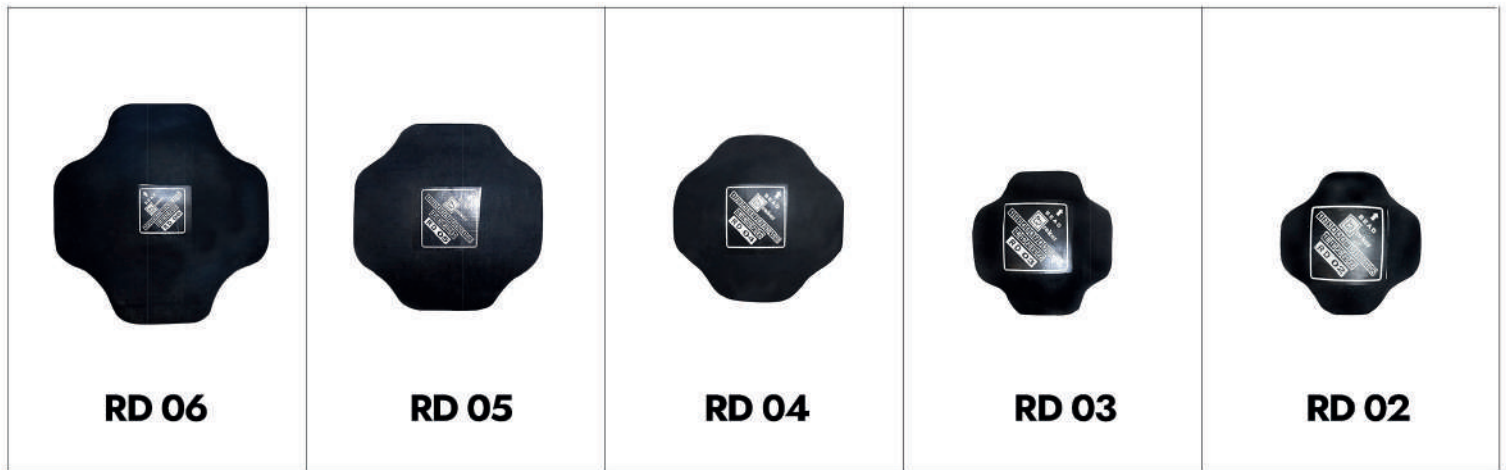
**RR 30**



**RR 12**



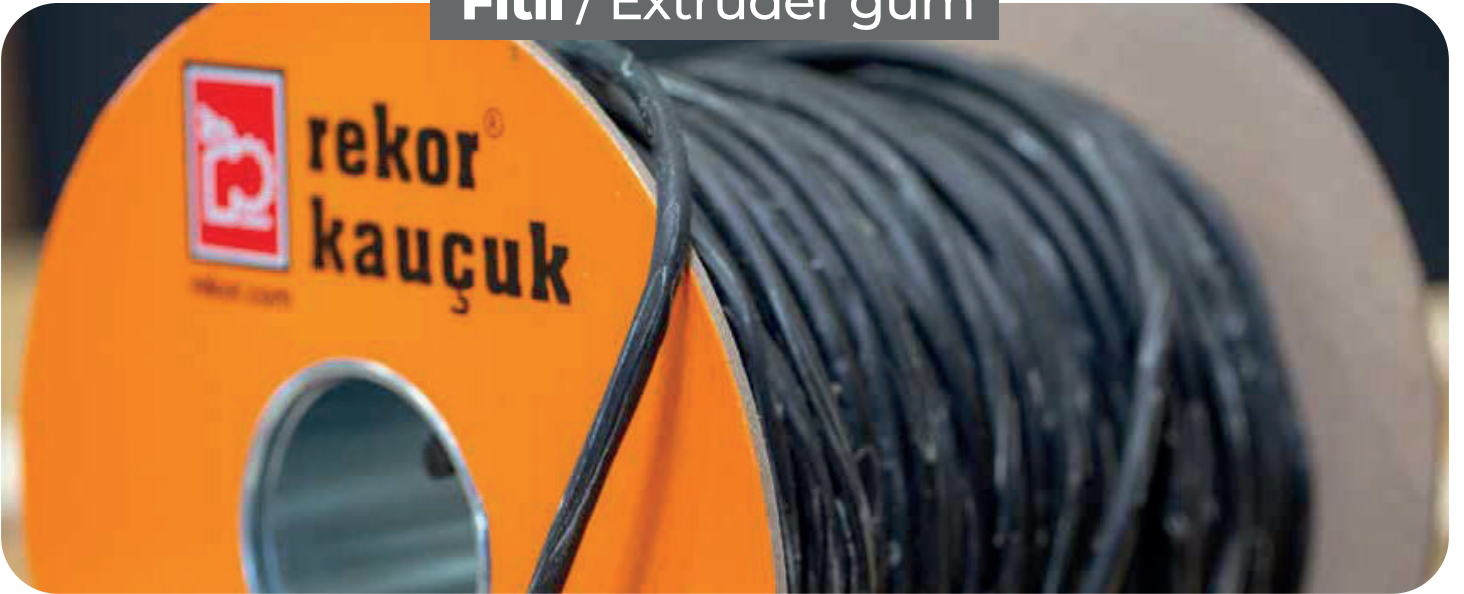
**RR 10**



**Kuřingam / Cushion gum**



**Fitul / Extruder gum**



**Sement / Cement**





rekor®  
kauçuk



## REKOR KAUÇUK SANAYİ VE TİCARET A.Ş.

### Genel Müdürlük / Head Office :

Velibaba Mah. Mimar Sinan Cad. No:17 34896 Pendik  
İstanbul / Türkiye  
Tel : +90 216 307 50 30 (pbx)  
Fax : +90 216 307 50 34

### Fabrika / Plant :

Eskişehir O.S.B. 21.Cad. No:20 26110 Odunpazarı  
Eskişehir / Türkiye  
Tel : +90 222 236 10 51  
Fax : +90 850 281 51 08