



rekor[®]
kauçuk

rekor.com

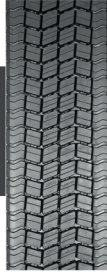


HERKÜL

PREMIUM PRECURE



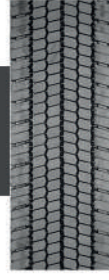
ULUSLARARASI / LONG HAUL



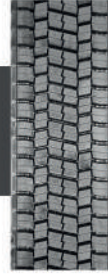
H-A4A



H-RA4A



H-DA2



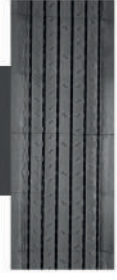
H-R729



H-TA



H-R20



H-TA2

BÖLGESEL / REGIONAL



H-DR



H-D2LT



H-D2I



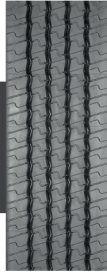
H-D2H



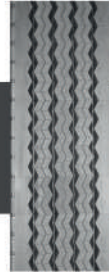
H-GP2



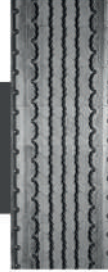
H-MD



H-ZE2



H-TE2



H-164

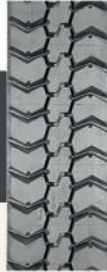


H-RT1000

ŞANTİYE / CONSTRUCTION



H-FS



H-FS2



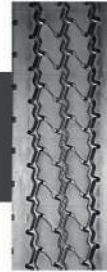
H-DY3



H-DY1



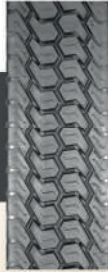
H-RD7500



H-ZY2



H-ZY



H-R32

YOL DIŞI / OFF THE ROAD



H-GZ

KIŞ / WINTER



H-RF4



H-DM4



H-GP

ALL THE BACKUP YOU NEED

HERKÜL
PREMIUM PRECURE

1947 Yılında İstanbul Kurtuluş semtinde kurulan Rekor Kauçuk, İstanbul Pendik' te kurulu merkez yerine 1978 senesinde taşınmıştır. Rekor Kauçuk; günümüzde kauçuk sektörünün Türkiye' deki öncü ve lider kuruluşlarından.

Türkiye, Avrupa ve Amerika' nın en iyi makine üreticileri tarafından üretilmiş en modern ekipmanlarla donatılmıştır. Üretim, 2017 yılında, Eskişehir Organize Sanayi Bölgesi'nde bulunan ve 75.000 m2 açık alan üzerine ve 38.000 m2 kapalı alan üzerine kurulu fabrikasına taşınmıştır. Soğuk sırt kauçuğu üretimi ve teknik hamur üretimi olmak üzere iki ana üretim bölümü mevcuttur.

Birinci bölüm hamur karışımı ile ilgili olup, ikinci bölümde ise soğuk kaplama sırt kauçuğu üretim tesisi bulunmaktadır. Her zaman mevcut standartların çok üstünde üretim yapma felsefesi, Rekor Kauçuk un kalitesini oluşturmaktadır.

Firmamız çağdaş teknolojilere sahip işletmesinde ve pazarlama hizmetinde ISO 9001:2015 - ISO 14001:2015 - ISO 45001:2018 - ISO 27001:2017 - IATF 16949:2016 - AS 9100:2016 - TS 13828, belgelerine sahip Türkiye'nin öncü kuruluşlarından. İstanbul Pendik, Genel Müdürlük olarak faaliyetine devam etmektedir.

Rekor Kauçuk being founded in 1947 in the Kurtulus district of Istanbul, has moved to its location in Pendik in 1978. Today Rekor is the leading company of Turkish Rubber Industry, equipped with the newest machineries of the best manufacturers in the world. The production has moved to it's new plant in Eskişehir Industrial Zone in 2017, with a total of 75.000 m2 land, 38.000 m2 of which is closed area. The production is mainly separated into two segments, technical compound production and precure tread production.

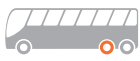
The first one is rubber compounding operations for a wide range of Automobile industry needs whilst the second one is producing precure treads for tyre retreading industry.

The philosophy of Rekor Kauçuk is always making better quality production above the existing standards. This is provided with the ISO 9001:2015 - ISO 14001:2015 - ISO 45001:2018 - ISO 27001:2017 - IATF 16949:2016 - AS 9100:2016 - TS 13828, quality certificates and served to its valuable customers. İstanbul Pendik office is still in operation as the Headquarter.

SEMBOLLER / ICON SET



Ş. İçi Otobüs / Urban



Ş. Arası Otobüs / Coach



Kamyon / Truck



Kamyonet / Light Truck



Damper / Dumper



Çekici / Truck



Treyler / Trailer



Mikser / Mixer



Uluslararası / Long Haul



Şantiye / Construction



Yoldışı / Off Road



M+S M + S Marking



Bölgesel / Regional



3PMSF



Yönlü / Direction



Şehir İçi / Urban

ULUSLARARASI / LONG HAUL

BÖLGESEL / REGIONAL

ŞANTIYE / CONSTRUCTION

YOL DIŞI / OFF-ROAD

KIŞ / WINTER

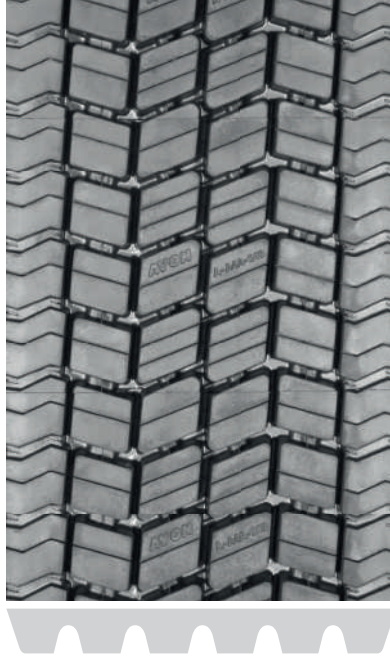


rekor[®]
kaçuk

**ALL THE
BACKUP
YOU NEED**

A4A

Uluslararası / Long Haul



±2MM	±0.5MM	±%2	±%2
240	17	4.42	10.1
250	17	4.54	10.1
260	17	4.88	10.1

RA4A

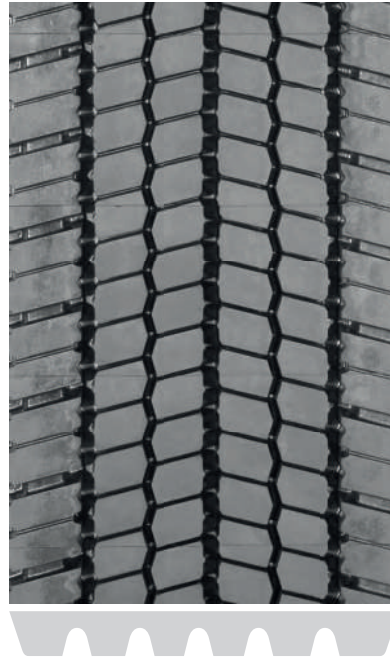
Uzun Yol / Long Haul



±2MM	±0.5MM	±%2	±%2
240	17	4.32	10.1
250	17	4.44	10.1
260	17	4.59	10.1

DA2

Uluslararası / Long Haul



±2MM	±0.5MM	±%2	±%2
250	18.5	5.03	10.1
260	18.5	5.14	10.1
275	18.5	5.51	10.1

R729

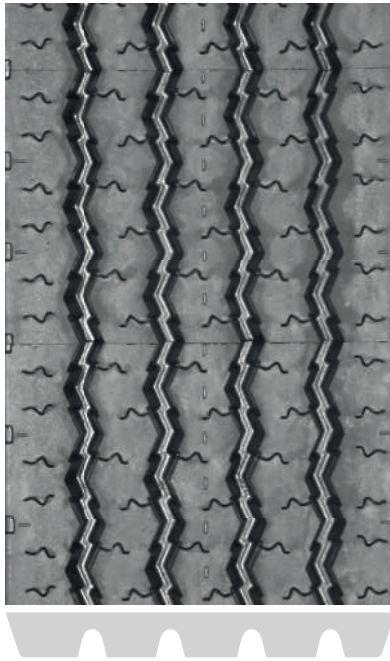
Uzun Yol / Long Haul



±2MM	±0.5MM	±%2	±%2
250	18	4.87	10.1
260	18	5.08	10.1
275	18	5.48	10.1
285	18	5.71	10.1

TA

Uluslararası / Long Haul



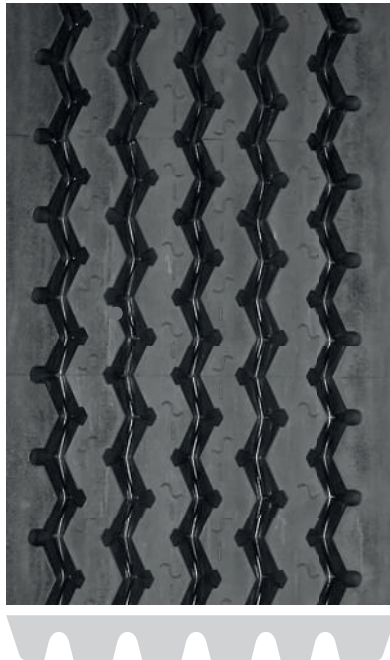
±2MM	±0.5MM	±%2	±%2
140	12	1.82	10.1
150	12	2.00	10.1
160	12	2.21	10.1
170	12	2.28	10.1
180	12	2.51	10.1
190	12	2.57	10.1
200	12	2.77	10.1
210	12	2.95	10.1
220	12	3.15	10.1
230	12	3.34	10.1
240	12	3.55	10.1
250	14	4.02	10.1
260	14	4.19	10.1

R20

Uluslararası / Long Haul

R20

Bölgesel / Regional



±2MM	±0.5MM	±%2	±%2
295	14	4.75	10.1

TA2

Uluslararası / Long Haul



±2MM	±0.5MM	±%2	±%2
380	13	5.87	10.1

DR

Bölgesel / Regional



±2MM	±0.5MM	±%2	±%2
160	15	2.37	10.1
170	15	2.36	10.1
200	17	3.47	10.1
240	20	4.70	10.1
250	20	4.88	10.1
260	20	5.04	10.1
275	20	5.49	10.1

D2LT

Bölgesel / Regional



±2MM	±0.5MM	±%2	±%2
180	15	3.06	10.1
190	15	3.22	10.1
210	16	3.84	10.1
230	18	4.60	10.1

D2I

Bölgesel / Regional



±2MM	±0.5MM	±%2	±%2
240	17	4.42	10.1
250	17	4.61	10.1
260	17	4.79	10.1
275	17	5.10	10.1

D2H

Bölgesel / Regional



±2MM	±0.5MM	±%2	±%2
250	22	5.54	10.1
260	22	5.70	10.1
275	22	6.05	10.1

GP2

Bölgesel / Regional



±2MM	±0.5MM	±%2	±%2
230	18	4.07	10.1
240	18	4.36	10.1
250	18	4.52	10.1
260	18	4.70	10.1
275	18	5.01	10.1

MD

Bölgesel / Regional



±2MM	±0.5MM	±%2	±%2
150	12	1.84	10.1
160	12	1.97	10.1
170	13	2.36	10.1
180	14	2.56	10.1
190	15	2.77	10.1

ZE2

Bölgesel / Regional



±2MM	±0.5MM	±%2	±%2
230	15	3.97	10.1
240	15	4.13	10.1
250	15	4.30	10.1
260	15	4.44	10.1
275	15	4.60	10.1

TE2

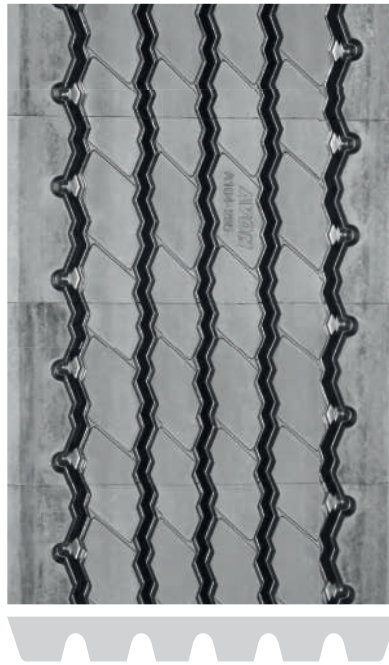
Bölgesel / Regional



±2MM	±0.5MM	±%2	±%2
295	14.5	4.99	10.1
310	14.5	5.19	10.1
330	14.5	5.57	10.1

164

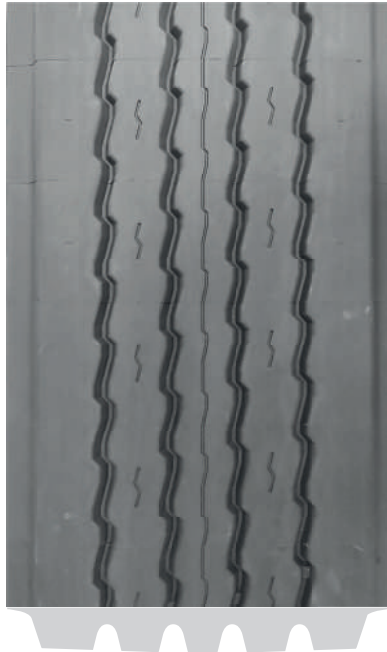
Bölgesel / Regional



±2MM	±0.5MM	±%2	±%2
295	14.5	4.87	10.1
310	14.5	5.19	10.1

RT1000

Bölgesel / Regional



±2MM	±0.5MM	±%2	±%2
295	14	5.51	10.1
310	14	5.57	10.1

FS

Şantiye / Construction



±2MM	±0.5MM	±%2	±%2
240	18	4.74	10.1
250	18	4.88	10.1
260	18	5.05	10.1
275	18	5.42	10.1

FS2

Şantiye / Construction



±2MM	+0.5MM	±%2	±%2
250	22	5.94	10.1
260	22	6.17	10.1

DY3

Şantiye / Construction



±2MM	+0.5MM	±%2	±%2
230	17	4.93	10.1
240	17	5.12	10.1
250	17	5.29	10.1
260	17	5.42	10.1
275	17	5.92	10.1

DYI

Şantiye / Construction



±2MM	+0.5MM	±%2	±%2
220	17	4.00	10.1
230	17	4.11	10.1
240	17	4.32	10.1
250	17	4.39	10.1
260	17	4.75	10.1

RD7500

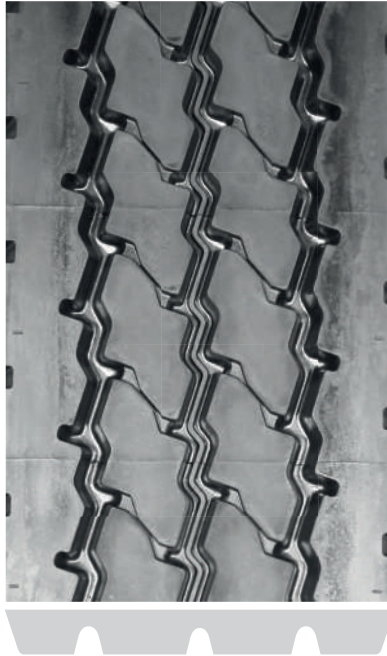
Şantiye / Construction



±2MM	±0.5MM	±%2	±%2
250	20	5.18	10.1
260	20	5.36	10.1

ZY2

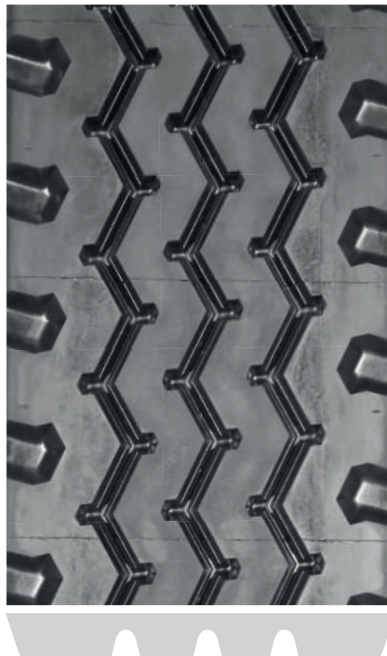
Şantiye / Construction



±2MM	±0.5MM	±%2	±%2
240	19	5.10	10.1
250	19	5.31	10.1
260	19	5.48	10.1

ZY

Şantiye / Construction



±2MM	±0.5MM	±%2	±%2
210	17	3.60	10.1
220	17.5	4.00	10.1
230	18	4.17	10.1
240	18	4.37	10.1
250	18	4.57	10.1
260	18	4.83	10.1

R32

Şantiye / Construction



±2MM	±0.5MM	±%2	±%2
295	14	4.67	10.1

GZ

Yol Dışı / Off-Road



±2MM	±0.5MM	±%2	±%2
230	22	5.13	10.1
240	22	5.34	10.1
250	22	5.55	10.1
260	22	5.84	10.1

RF4

Kış / Winter



±2MM	±0.5MM	±%2	±%2
260	18	5.18	10.1
275	19	5.67	10.1
285	18	5.59	10.1

DM4

Kış / Winter



M+S



±2MM	±0.5MM	±%2	±%2
250	19	5.43	10.1
260	19	5.64	10.1
275	19	5.94	10.1

*Not available in EU countries, USA and Canada

GP

Kış / Winter



M+S



±2MM	±0.5MM	±%2	±%2
140	12	1.60	10.1
150	12	1.89	10.1
160	12	2.03	10.1
170	12	2.09	10.1
180	13	2.43	10.1
190	14.5	2.78	10.1
200	16	3.10	10.1
210	16	3.24	10.1
220	16	3.43	10.1
230	17	3.59	10.1
240	17	3.71	10.1
250	17	3.88	10.1
260	17	3.93	10.1



YAMALAR



RD 10



RD 09



RD 08



RD 07



OTR 5



OTR 4



OTR 3



RR 460



RR 440



RR 56



RR 52



RR 42



RR 40



RR 35



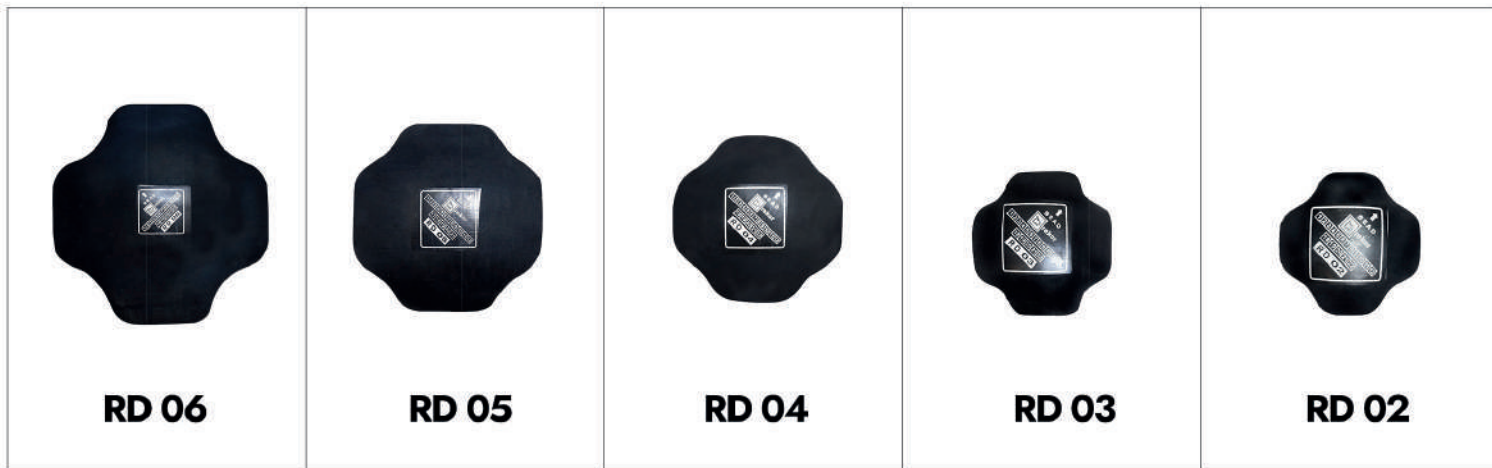
RR 30



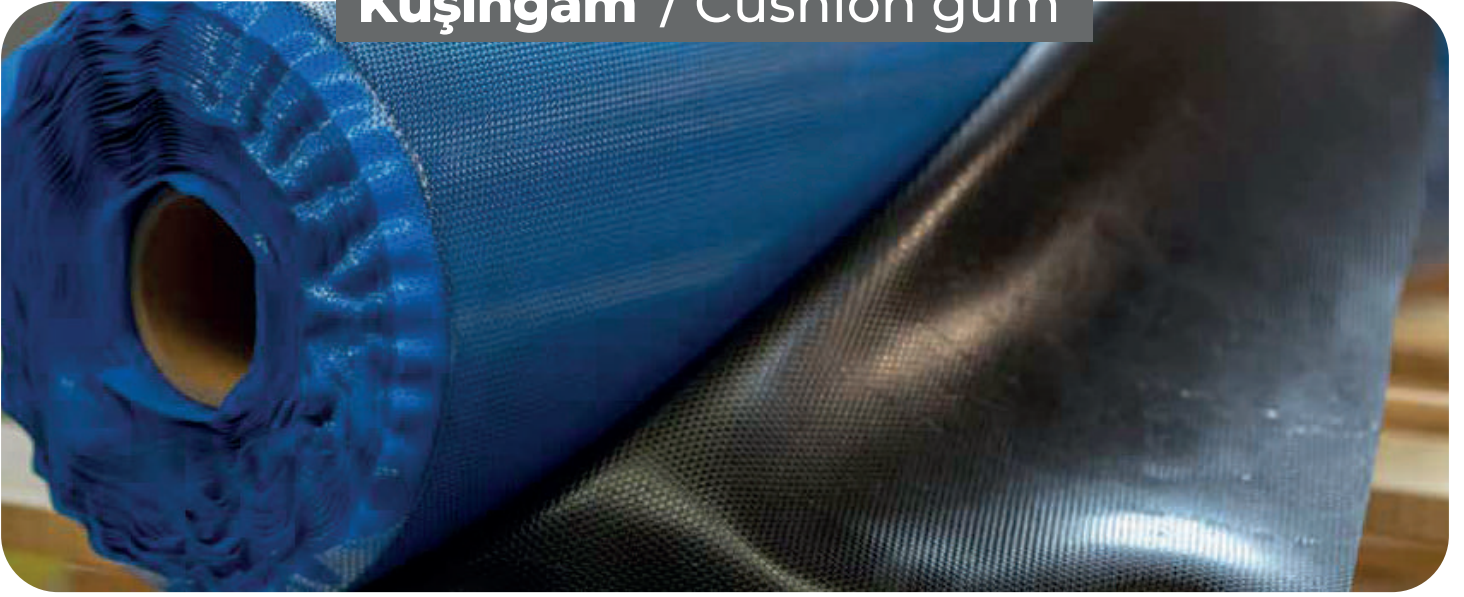
RR 12



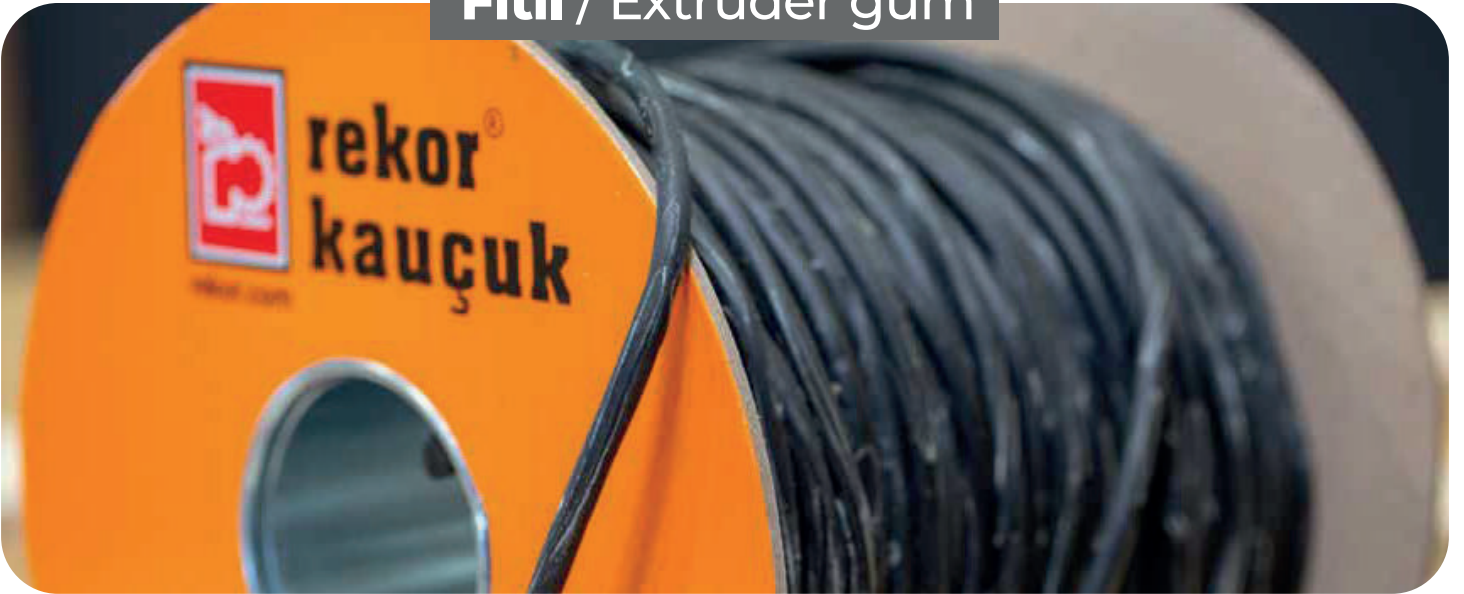
RR 10



Kuřingam / Cushion gum



Fitul / Extruder gum



Sement / Cement





**rekor[®]
kauçuk**

**ALL THE
BACKUP
YOU NEED**

rekor®
kauçuk



REKOR KAUÇUK SANAYİ VE TİCARET A.Ş.

Genel Müdürlük / Head Office :

Velibaba Mah. Mimar Sinan Cad. No:17 34896 Pendik

İstanbul / Türkiye

Tel : +90 216 307 50 30 (pbx)

Fax : +90 216 307 50 34

Fabrika / Plant :

Eskişehir O.S.B. 21.Cad. No:20 26110 Odunpazarı

Eskişehir / Türkiye

Tel : +90 222 236 10 51

Fax : +90 850 281 51 08

rekor@rekor.com

rekor.com